



**Fill Factory s.r.o.**  
Rožnov pod Radhoštěm

## Laser marking and engraving

We offer You small batch/series laser marking, engraving, grooving, cutting and drilling

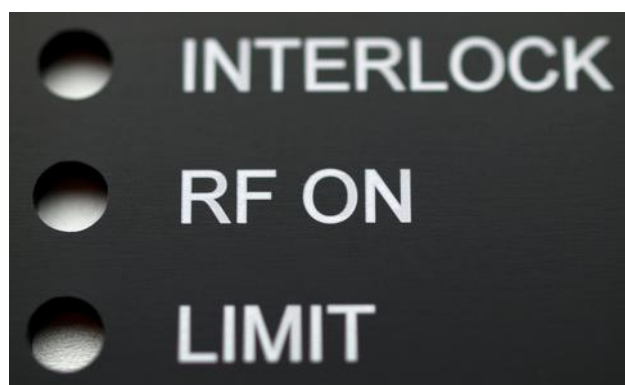
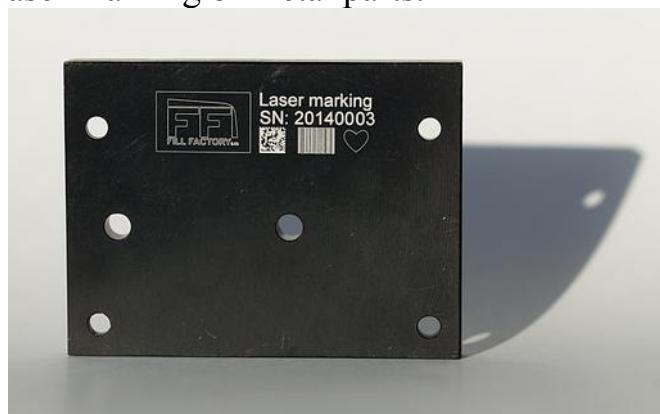
**What kind of material we like to work:**

- metals – anodized aluminium, aluminium, brass, copper, stainless steel
- plastics – ABS
- organic materials– Printed Circuit Boards (FR4), balsa, plywood, wood, paper
- glass – marking with glass frit sinterable pigments
- alumina ceramic substrates (corundum- $\text{Al}_2\text{O}_3$ )
- and of course silicon - Si. One of our most popular material ;).

**Production from 1 pc.**

**Examples for your inspiration**

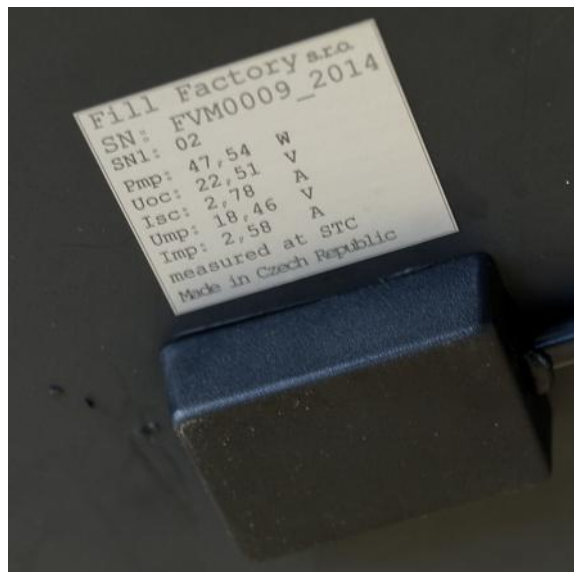
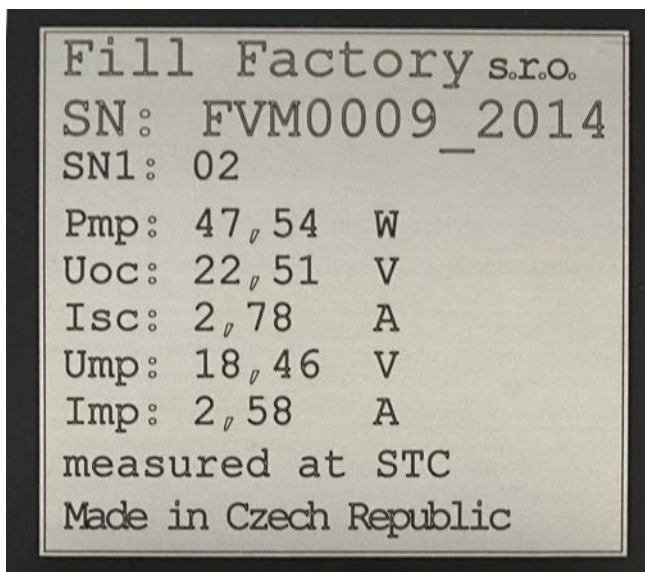
Laser marking of metal parts.



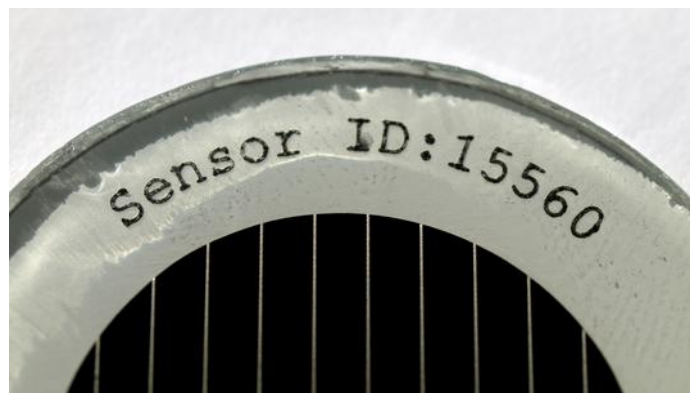
## Laser marking on wood: different hue, different hatch



## PV module labels (laser sticker)



## Marking of backsheet in PV laminate (e.g. our [irradiation sensors](#))



## Contact information and technical consultation

Fill Factory s.r.o., Televizni 2618, Roznov pod Radhostem 756 61, Czech Republic, Europe, Earth  
email: [laser@fillfactory.cz](mailto:laser@fillfactory.cz)

Jiří Hladík: +420 724 358 429

Radim Bařinka: +420 724 104 385